

THD GateKeeper

Minimally Invasive Treatment
for Soiling & Fecal Incontinence



- Initial benefit maintained over the time
- Rapid return to daily activities
- Easy to use for the surgeon

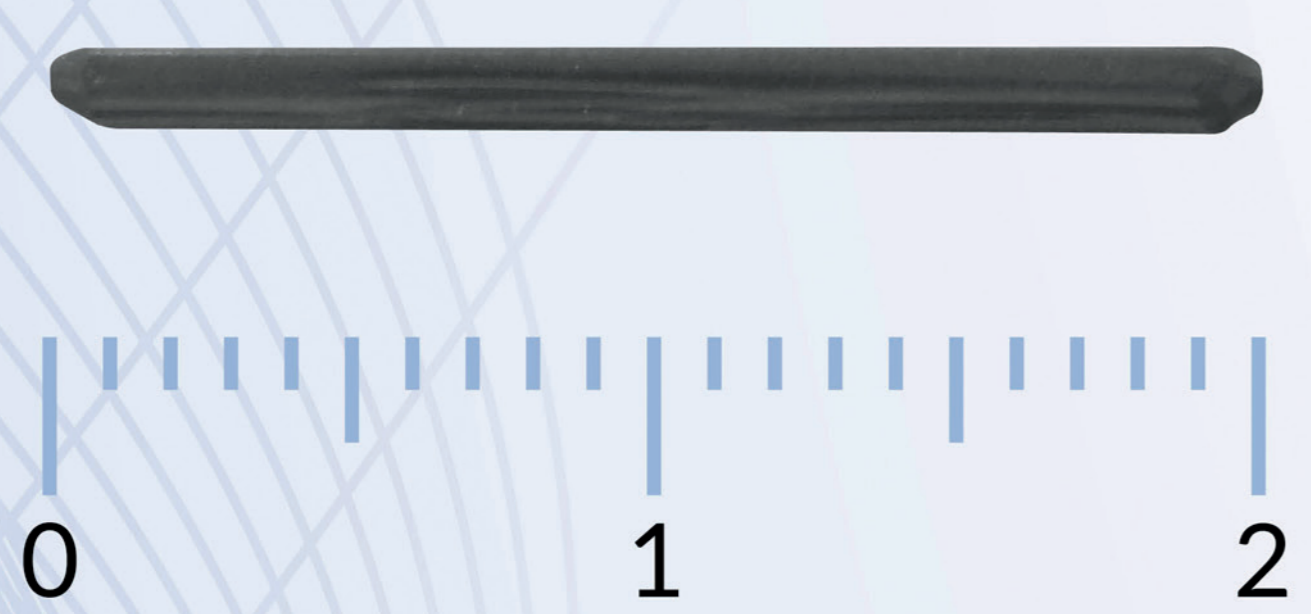
Sterile **THD Gatekeeper** self-expandable implants are inserted between external and internal anal sphincters.

Over 24-48 hrs. the implants expand in size, producing the “**bulking effect**” in the treatment of Fecal Incontinence & Soiling

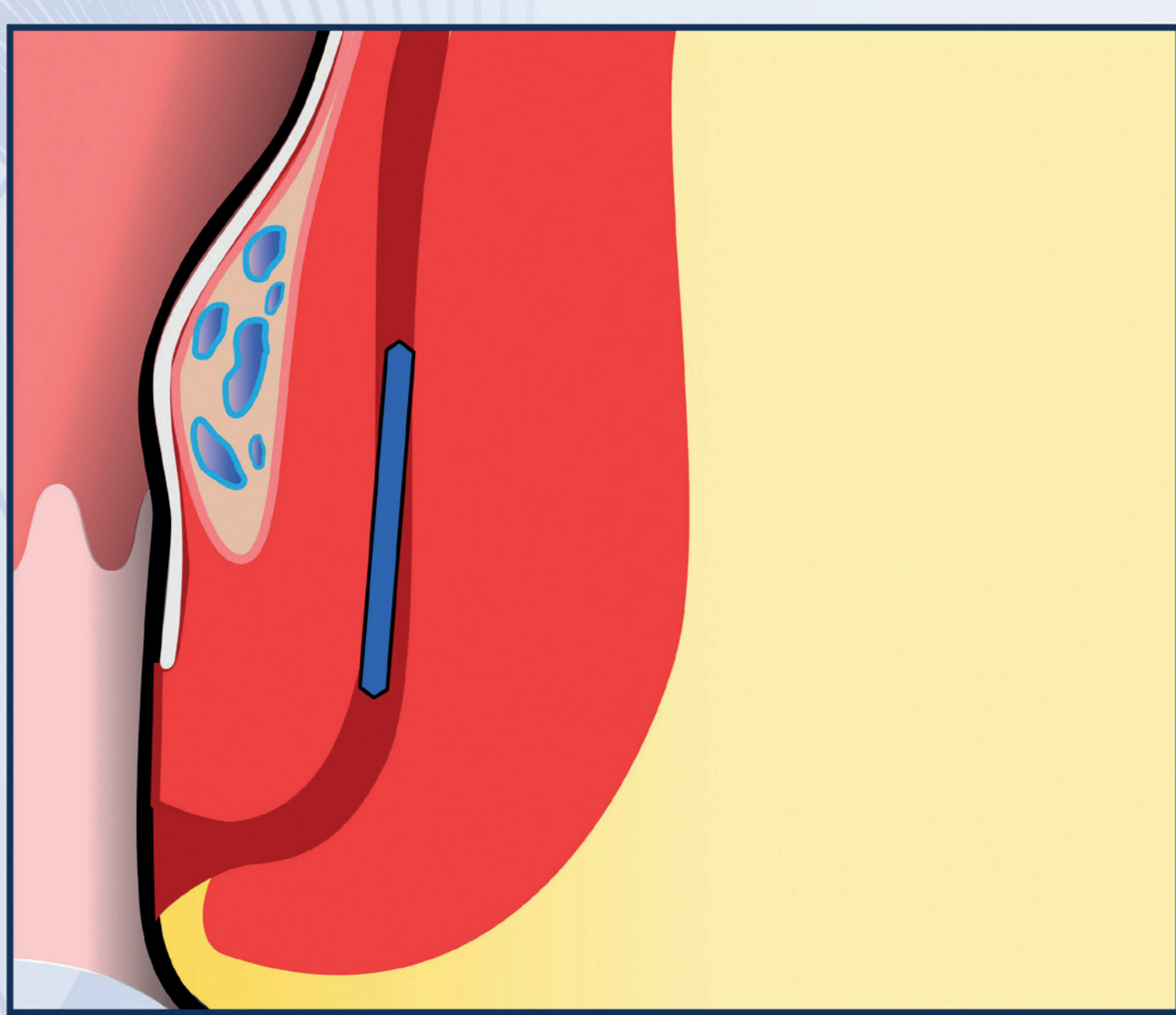
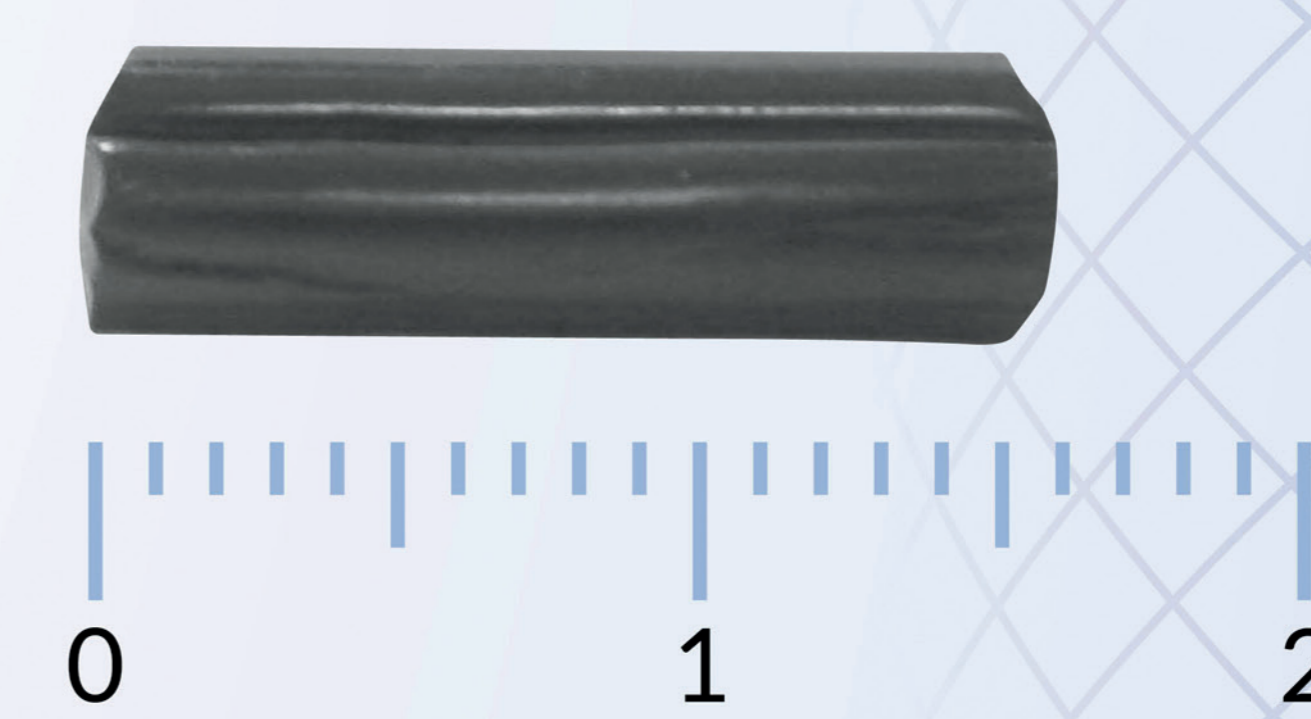
SELF-EXPANDABLE IMPLANT

BEFORE IMPLANTATION

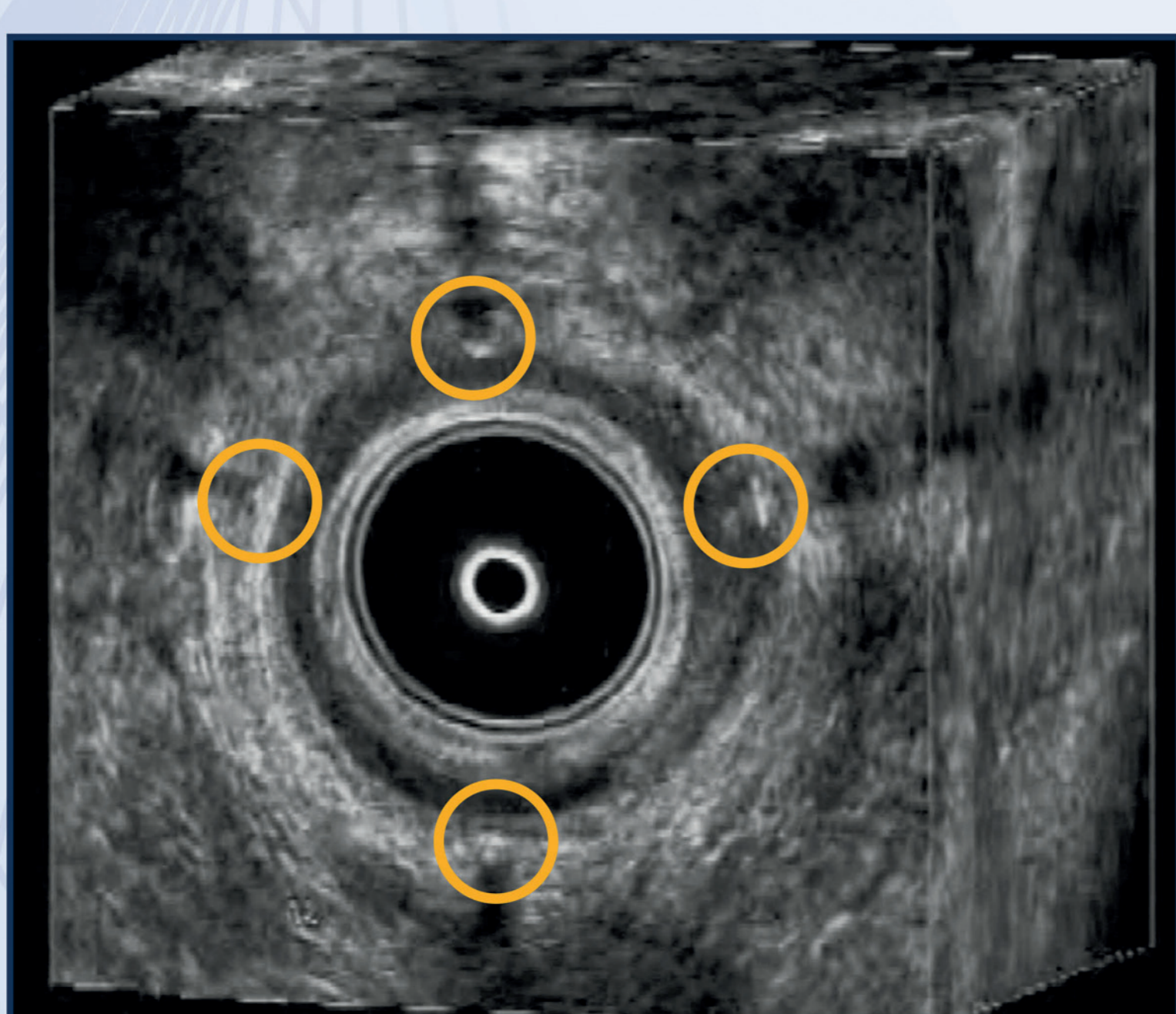
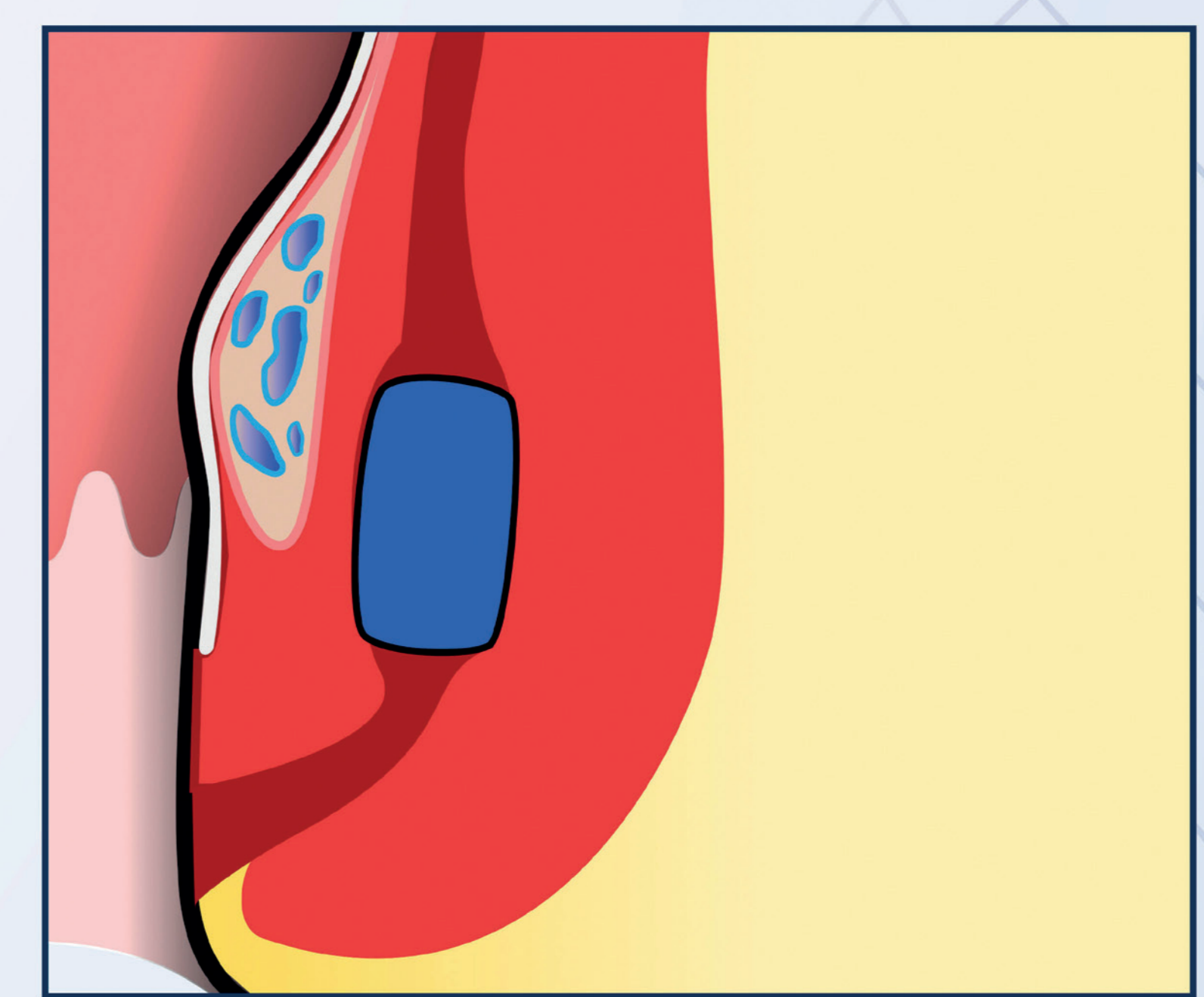
AFTER
(24 - 48 hrs. from implantation)



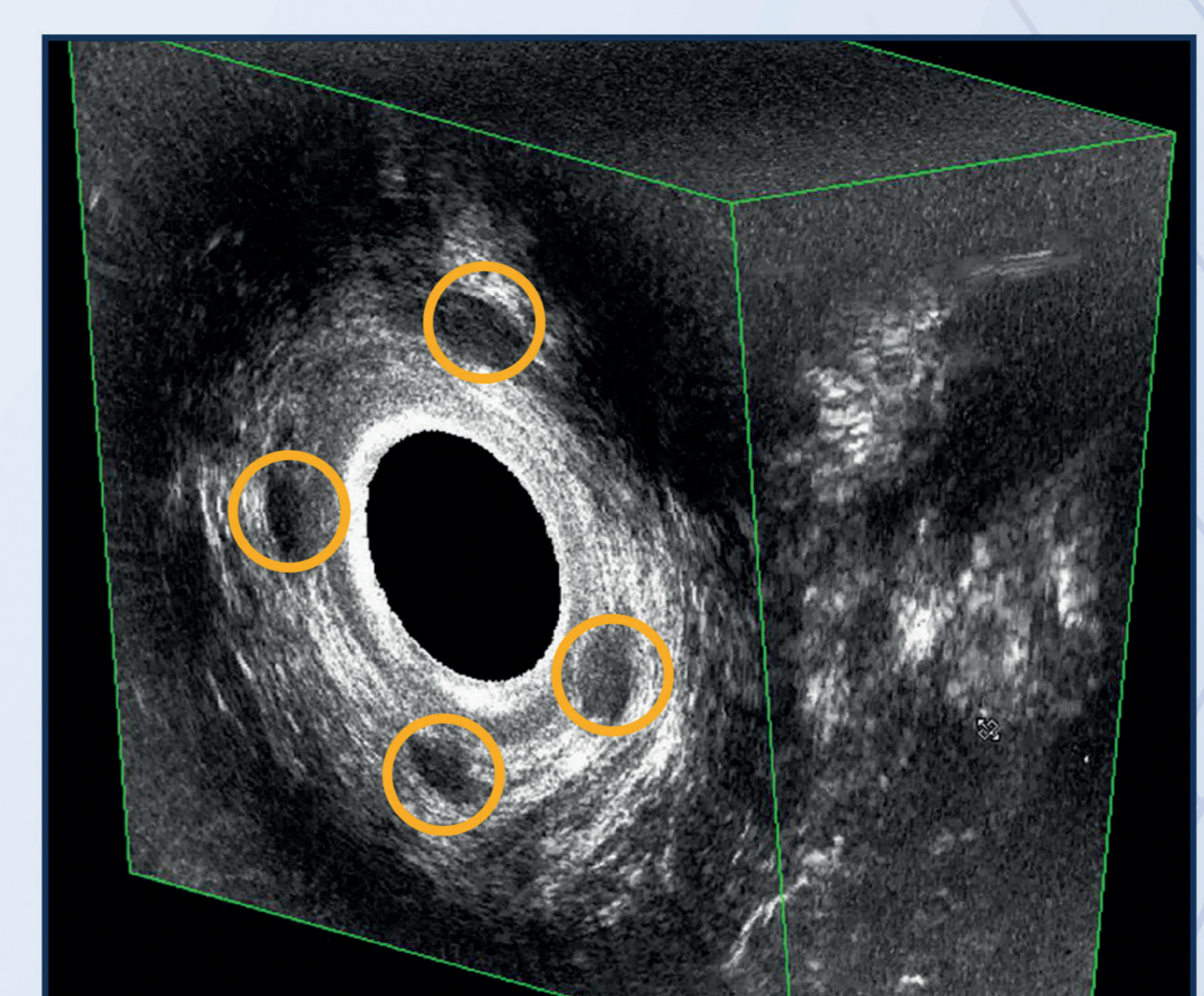
SELF-EXPANDABLE
IMPLANT



ANATOMICAL SECTION



ULTRASONOGRAPHY



Disposable Delivery System & Self-Expandable Implants

